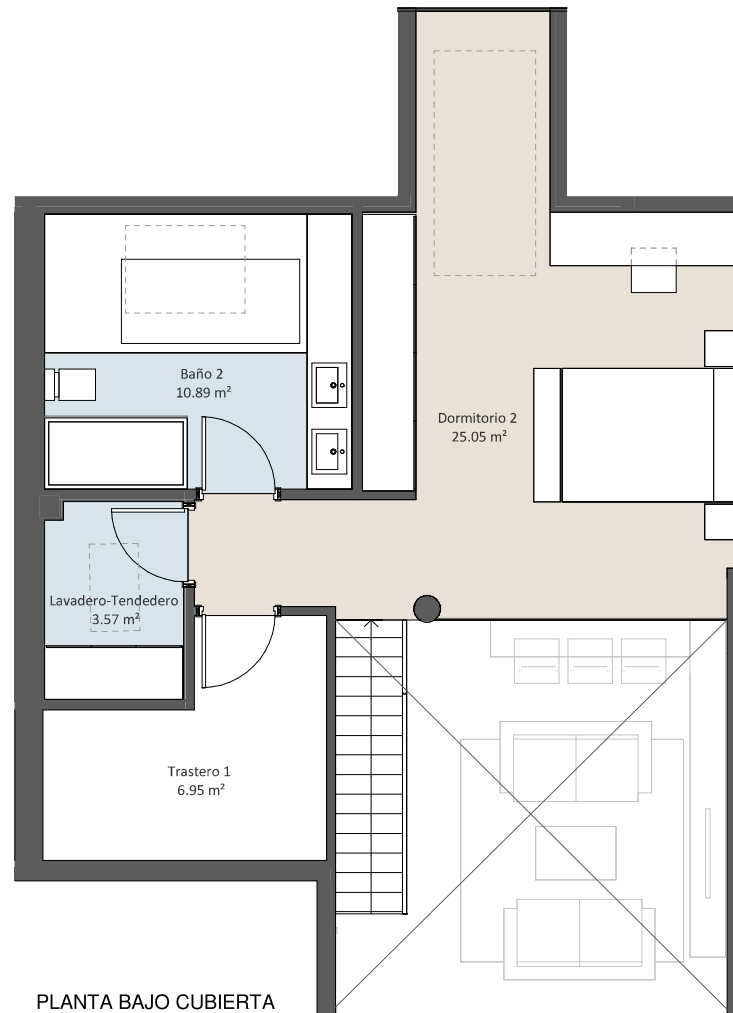
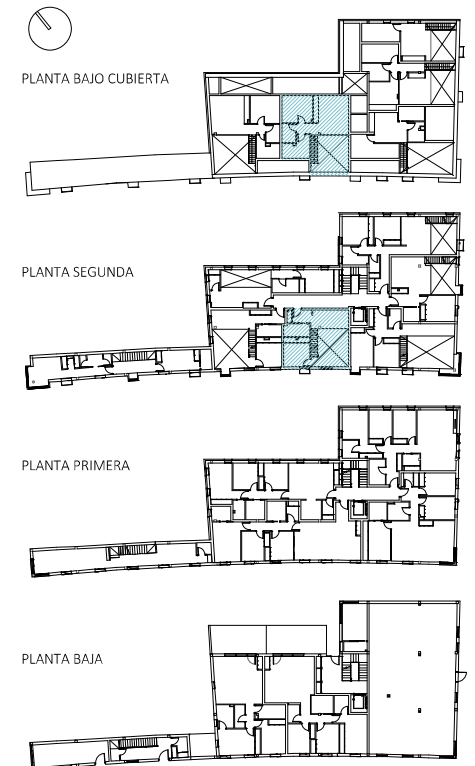


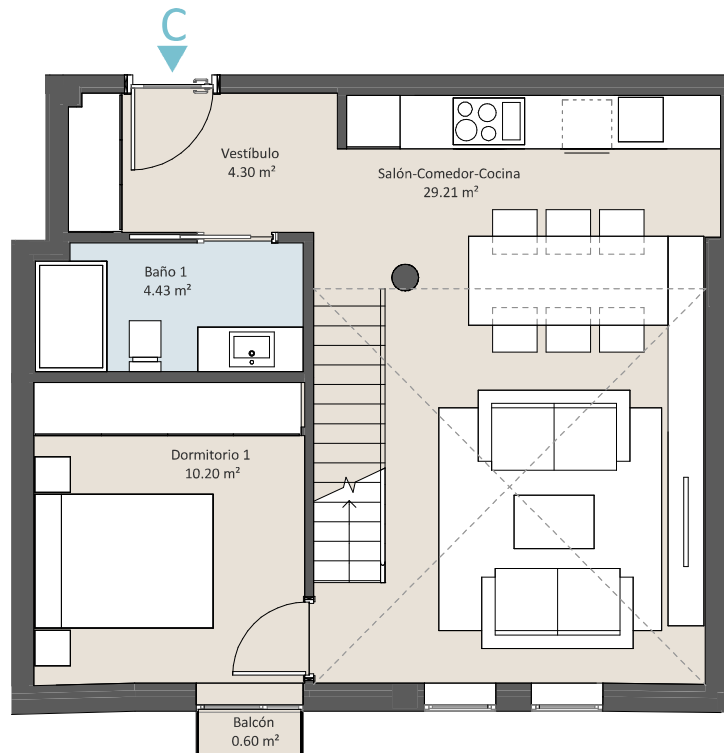


P02 - Vivienda C

| | |
|---|-----------------------------|
| Salón-Comedor-Cocina | 29.21 m ² |
| Vestíbulo | 4.30 m ² |
| Dormitorio 1 | 10.20 m ² |
| Dormitorio 2 | 25.05 m ² |
| Baño 1 | 4.43 m ² |
| Baño 2 | 10.89 m ² |
| Lavadero-Tendedero | 3.57 m ² |
| Trastero 1 | 6.95 m ² |
| TOTAL SUPERFICIE ÚTIL VIVIENDA | 94.60 m² |
| TOTAL SUPERFICIE ÚTIL TERRAZA/S | 0.60 m² |
| TOTAL SUPERFICIE CONSTRUIDA VIVIENDA | 102.69 m² |



PLANTA BAJO CUBIERTA



PLANTA SEGUNDA