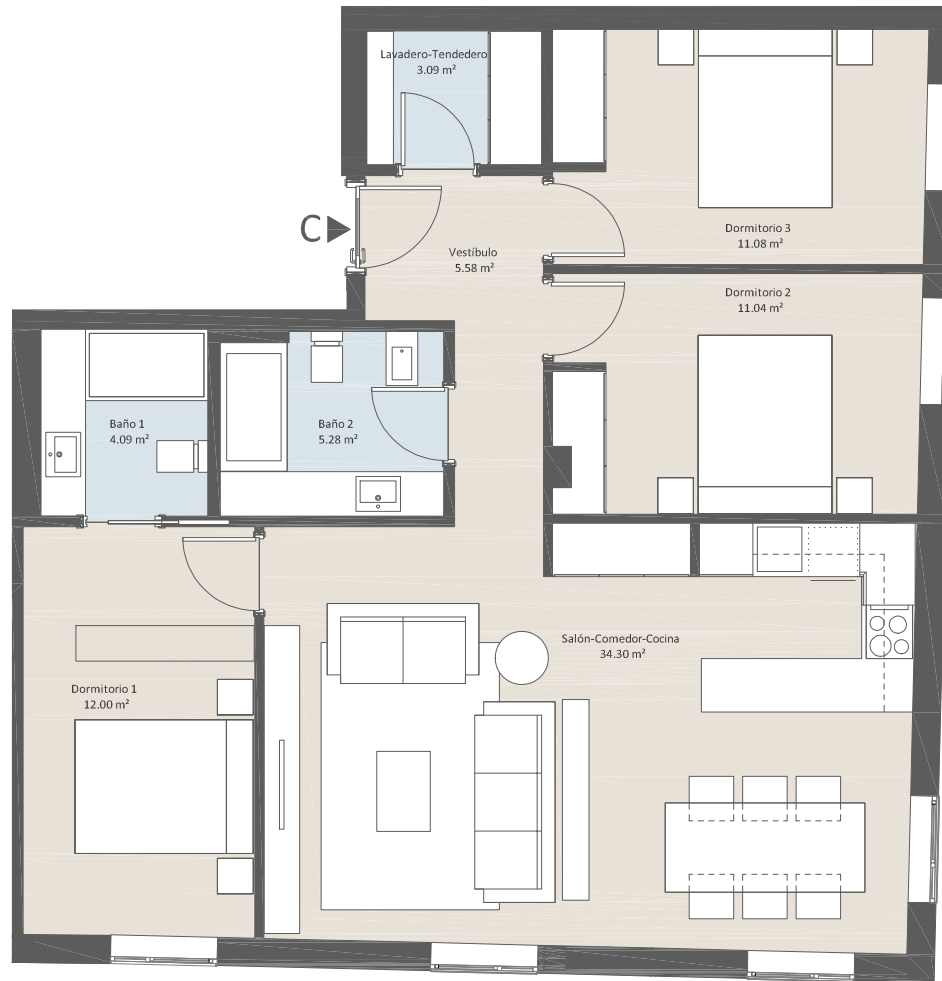


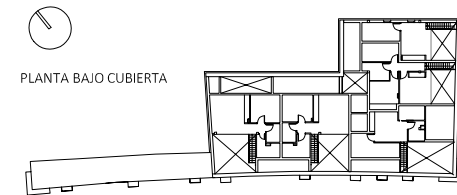


P00- Vivienda C

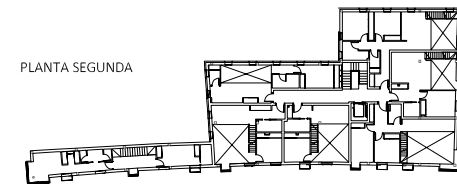
Salón-Comedor-Cocina	34.30 m ²
Vestíbulo	5.58 m ²
Dormitorio 1	12.00 m ²
Dormitorio 2	11.04 m ²
Dormitorio 3	11.08 m ²
Baño 1	4.09 m ²
Baño 2	5.28 m ²
Lavadero-Tendedero	3.09 m ²
TOTAL SUPERFICIE ÚTIL VIVIENDA	86.46 m²
TOTAL SUPERFICIE CONSTRUIDA VIVIENDA	98.64 m²



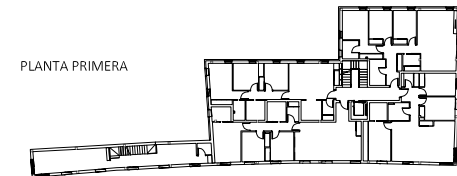
PLANTA BAJA



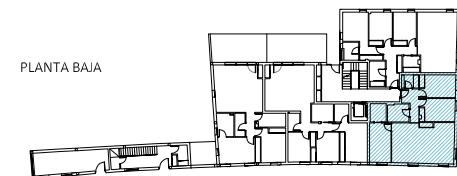
PLANTA BAJO CUBIERTA



PLANTA SEGUNDA



PLANTA PRIMERA



PLANTA BAJA

